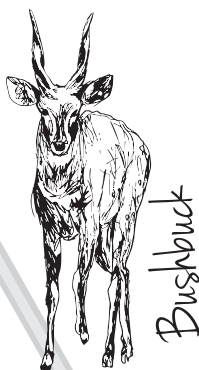


Aloes. They take 3-4 years to grow leaves 1,5 kg in weight. They reach 3 m in height, can be harvested for cosmetics.

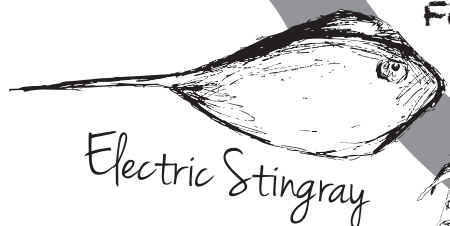
Barred Owl. It is greyish brown above with fine buff bars and a narrow white eyebrow. Bill and cere are dull greenish yellow and the eyes, legs and feet are yellow. Length is about 17 cm and wingspan is 40 cm.



Bushbuck are basically solitary, nocturnal animals about 90cm high from 45-80 kg in weight. Extremely dangerous when wounded.



Electric ray. The electric discharge, ranging from 8 to 220 volts, depending on species, normally in shallow waters, used to stun prey and for defense. The ancient Greeks used electric rays to numb the pain of childbirth and operations. Not lethal.



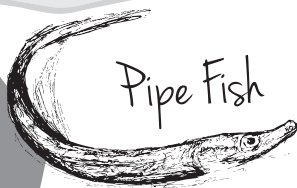
Mud Prawn Mud prawn are burrowers that live in U shaped burrows which they excavate and continuously maintain. They are key prey for fisherman and fish, and valuable in the food chain, sadly under threat.



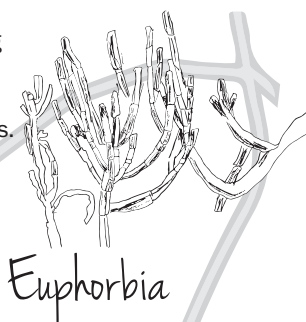
Mullet have served as an important source of food. Up to 4 kg in weight, often seen skipping out of the water. The family includes about 78 species in 20 genera.



Pipefish. Cylindrical long fish about 100mm long. It lives in tidal eelgrass habitat and feeds on zooplankton.

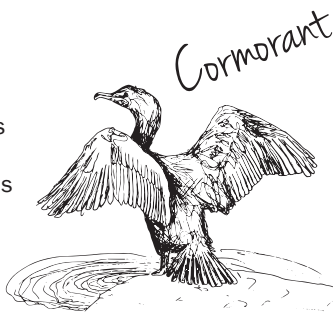


Euphorbia. The plants share the feature of having a poisonous, milky, white, latex-like sap, and unusual and unique floral structures.



Loerie. Within its range, this is an unmistakable bird, although often inconspicuous in the treetops. It is 40-42 cm long, including a long tail. The small but thick orange-red bill and a white line just under the eye contrast with the mainly green plumage.

There are 40 species of aquatic birds commonly known as **cormorants** and shags. Cormorants and shags are birds, with body weight in the range of 0.35-5 kilograms and wing span of 45-100 centimetres. Cormorant species have been found to dive as deep as 45 metres.

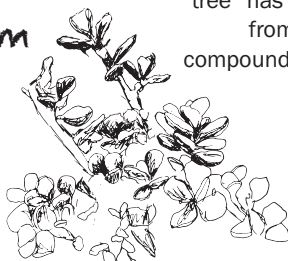


Kingfisher, small to medium-sized, brightly colored birds. The family contains 114 species and is divided into three subfamilies: river kingfishers (Alcedininae), tree kingfishers (Halcyoninae), and water kingfishers (Cerylinae). All kingfishers have large heads, long, sharp, pointed bills, short legs, and stubby tails.



KARIEGA RIVER

Spekboom, nicknamed "the money tree" has strong conversion processes from inorganic carbon to organic compounds, oxygen living organisms... ie reduced carbon.

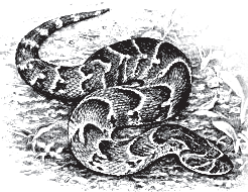


Adult **bushpigs** stand from 66 to 100 cm, and weigh from 55 to 150 kg, lives in forests, woodland, riverine vegetation, they are omnivorous.

Fisheagle, The African fish eagle is a large bird, and the female, at 3.2-3.6 kg is larger than the male, at 2.0-2.5 kg. Males usually have wingspans around 2 metres while females have wingspans of 2.4. Toes called spiricules that allow it to grasp fish and other slippery prey.



Puff Adder, The most snakebite fatalities in Africa. Frequent occurrence in highly populated regions, and aggressive disposition, average size is about 1m in total length (body + tail) and very stout.



The venom has cytotoxic effects[13] and is one of the most toxic of any vipers, litters of over 80 have been reported.

Tree Dassie. The tree Hyrax is small (4 kg) nocturnal mammal distantly related to the elephants. Has 4 front toe front and 3 toed back feet. Climb trees.



There 308 types of **cycads** in the world, with 38 cypad species, in SA, 26 of South Africa's cycad species threatened with extinction and 12 cycad species classified as Critically Endangered.



SEA



T: +27 (0)46 648 2867 | C: +27 (0)82 808 5976 | info@woodlandscottages.co.za
www.woodlandscottages.co.za | goatshedkenton | woodlandskenton

